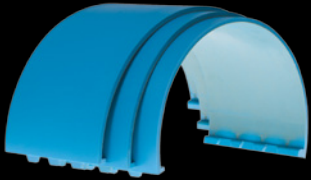


Anvilok® Cover Installation

Product Lines
Anvilok V
(A5, A5R)
(for Equalizer® and
Equamount)



Scan this code or visit dicar.com to watch instructional video



10 Bloomfield Avenue
Pine Brook, NJ 07058
ph: +1-973-575-1377
toll free: 1-800 323-4227
email: info@dicar.com
www.dicar.com

TOOLS



CVR-REM
Pry Bar



MLT-RS4LB
Dead Blow Mallet

Anvilatch™ (optinal)

The unique **Anvilatch** system increases the efficiency and enhances the safety of mounting rotary diecutting blankets/covers by eliminating the need to use a mallet to lock the cover. For more information visit dicar.com.

! CAUTION

Use only tools recommended by Dicar to remove and/or install anvil covers. Use of improper tool may result in injury or damage to covers and/or die cylinder.

! IMPORTANT

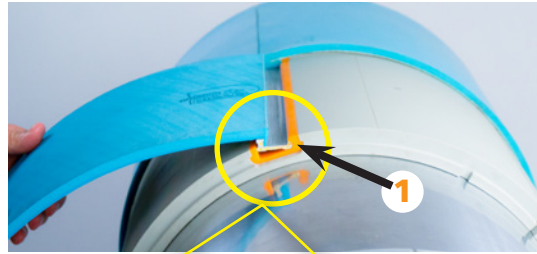
Prior to installing anvil covers inspect lockup slot for damage, sharp edges or burrs, and ensure slot is free of contaminates to ensure proper lockup.

! WARNING

Remove cutting dies prior to removing, installing or rotating anvil covers. Failure to do so can result in personal injury and/or damage to tooling.

Installation

- 1 Insert female end

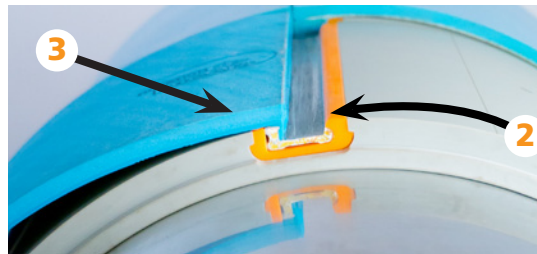


CORRECT

INCORRECT



- 2 Wrap cover onto drum
- 3 Align outer edges



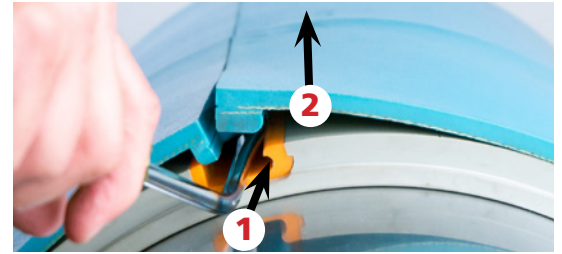
- 4 Secure by hammering the male end fully into the female end.



- When properly installed, the lockup area should be smooth and even with no steps.

Removal

- 1 Insert the pry bar (CVR-REM) in slot beneath lockup ends.



- 2 Pry up on the male and female ends to disengage the lockup. Work your way across the cover to fully disengage the lockup.



! CAUTION

Do not insert the pry bar between the cover and the anvil surface. Damage to the covers and/or anvil may occur.

Dicar offers a full range of anvil cover styles and sizes, and other urethane products.

Visit dicar.com, or contact your local Dicar Representative to view our catalog of quality Dicar diecutting and die-making products and services.

